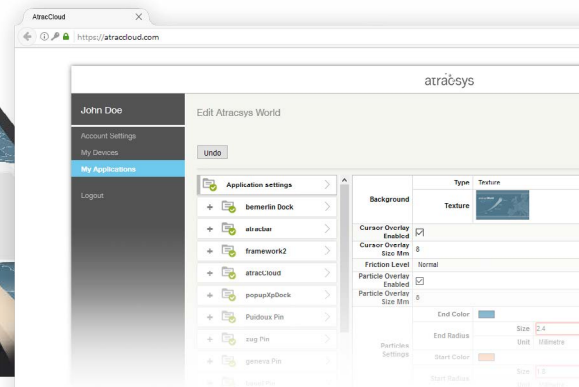
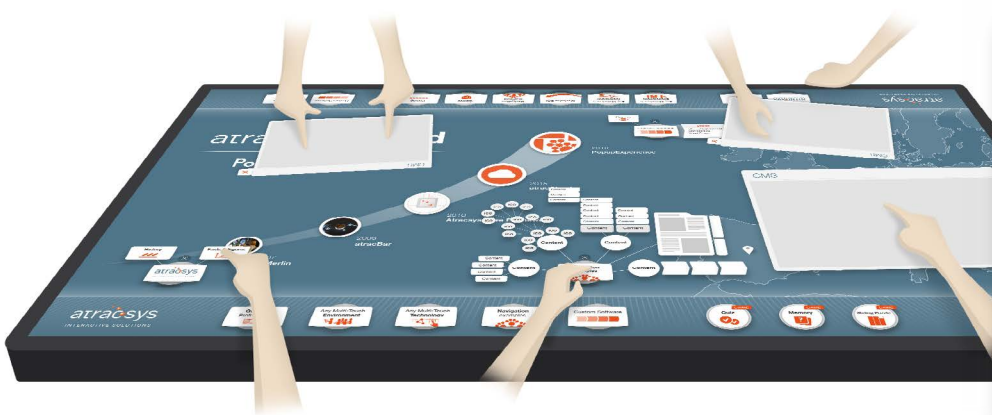


Professional Multi-User Multi-Touch Application

The Atracsys PopupExperience is a professional, fully customizable Multi-User Multi-Touch Application optimized for large-format touchscreens.

Organize your promotional material - videos, presentations, pictures - in a clear data structure and make it easily accessible to anyone, at anytime. With the touch of a finger, customers as well as employees are able to experience together all of your digital assets. Never has interaction with digital content been more intuitive. Everyone will focus on what's important: the messages you want to convey.

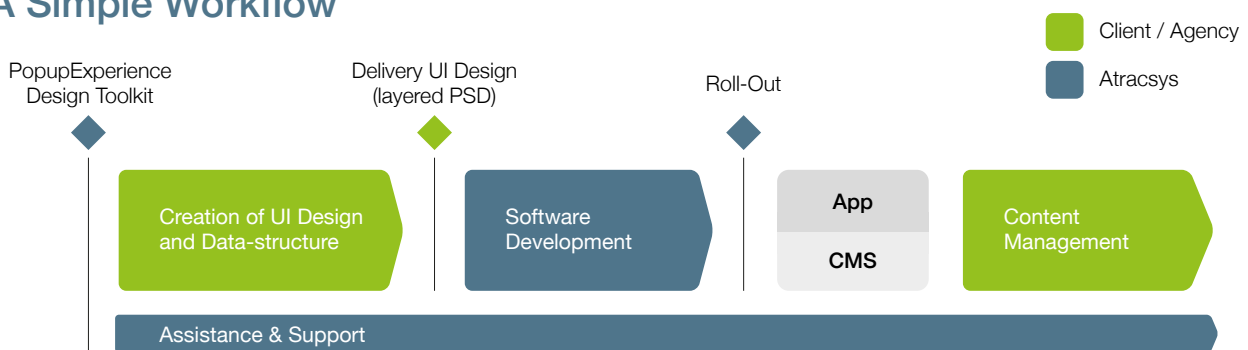


atracCloud CMS

Content Management in the Cloud

Every PopupExperience has its own individual content management system (CMS), unique to the underlying data structure. The Swiss-hosted atracCloud services give you data security and full control over your content. Manage all your PopupExperiences in one place and deploy on multiple devices at once. Different access levels even offer the possibility to delegate content management to third parties such as a communication agency.

A Simple Workflow



According to our development process, you or your agency will provide the data structure and the UI design. Once done, we will bring your design to life within few working days. Import your content and publish it to enjoy your Multi-User Multi-Touch application.

PopupExperience Design Toolkit

The PopupExperience Design Toolkit is your first step to enter the world of Multi-User Multi-Touch Applications.

- Learn about the basic features
- Try out the complete ecosystem for yourself
- Become a UX expert

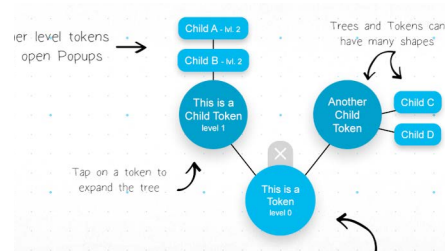
Want to start right away?

Get in touch with us at info@atracsys.com to get access to the PopupExperience Design Toolkit.

Standalone Tutorial App

This application will walk you through the basic features of the PopupExperience.

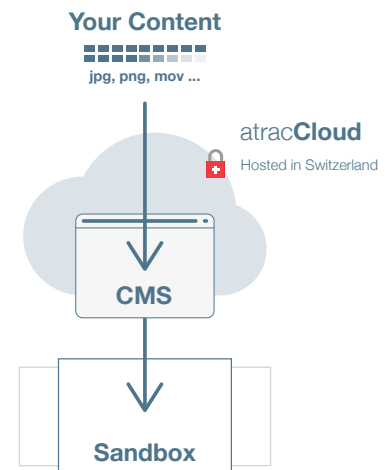
- Run the executable file and follow the installation notice to launch the application.
- Experience the application by following comments and arrows.



Sandbox / CMS / atracCloud

The sandbox is designed to give you full access to our CMS in order to better understand how the cloud and the application interact with each other.





- Install and run our atracCloud Client application.
- Login to your CMS with the account setting you have received from us. Manage your media and enjoy your new content on your Multi-Touch device.



PopupExperience Design Guidelines

In this guide, you will find detailed explanations for each feature available in the PopupExperience.

Get inputs about how to create the graphical part of the application according to our UX design recommendations.

-  Understand elements
-  UX & interactions
-  Customize
-  Get design tips